

progress of wheat crop in tarn taran district

Year	Area (000ha)	Average yield (Kg/ha)	Production (000,MT)
2003-04	176	4296	760
2004-05	185	4275	794
2005-06	186	4456	829
2006-07	183	4135	757
2007-08	185	4366	807
2008-09	186	4450	829

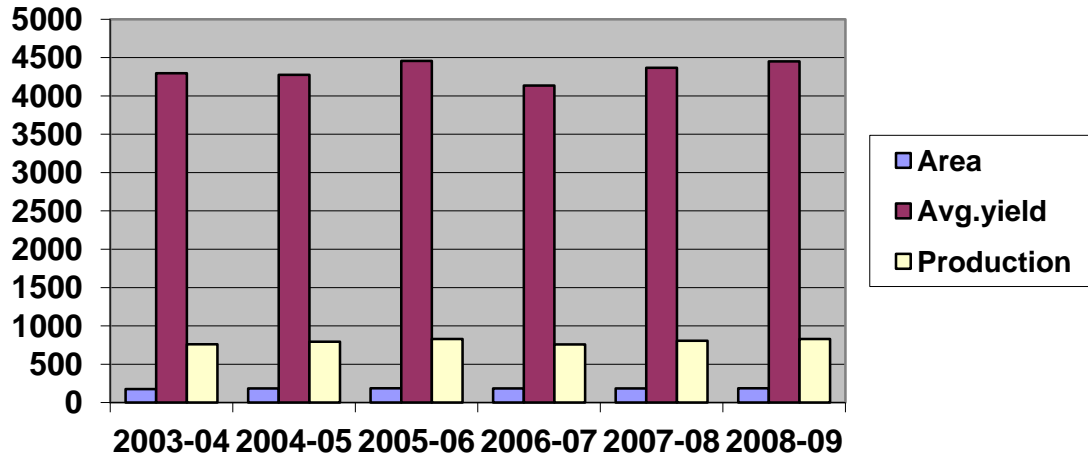


Table-19 Progress of Rice crop in Tarn Taran District

year	Area (000ha)	Average yield (Kg/ha)	Production (000,MT)
2003-04	156	2675	418
2004-05	161	3095	499
2005-06	143	2831	470
2006-07	153	2898	443
2007-08	145	3592	523
2008-09	131	3846	502

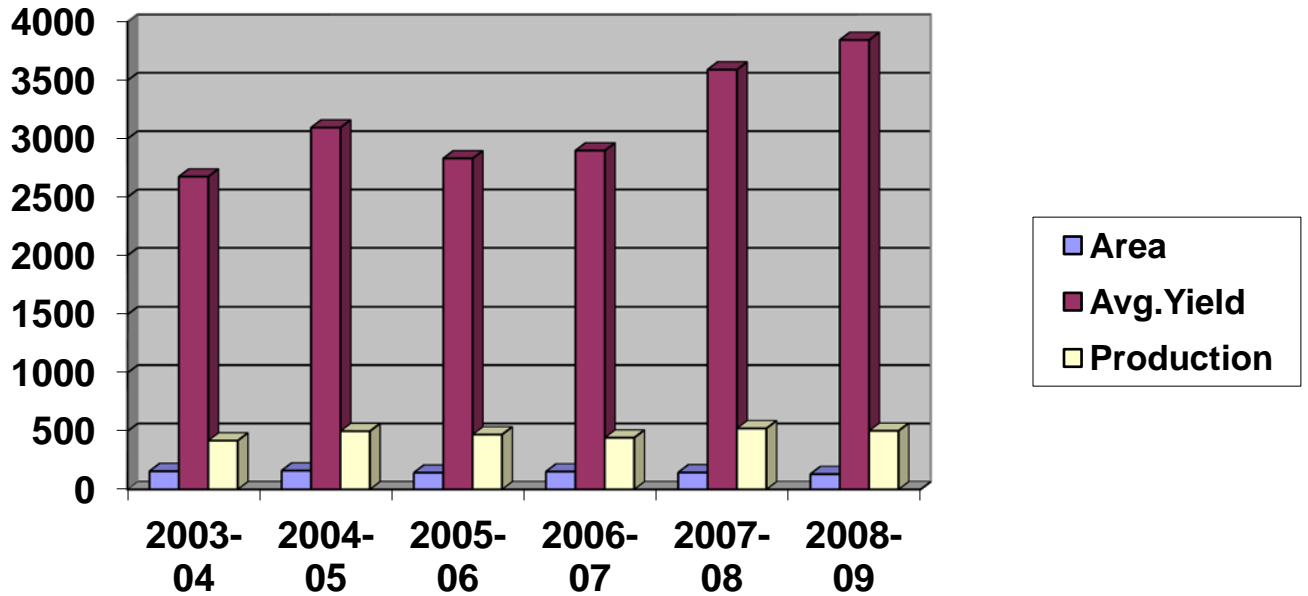


Table-20 Progress of Basmati rice in Tarn Taran District

Year	Area (000ha)	Average yield (qtl/ha)	Production (000,MT)
2005-06	24	24	55
2006-07	21	29	59
2007-08	25	22	56
2008-09	36	25	90

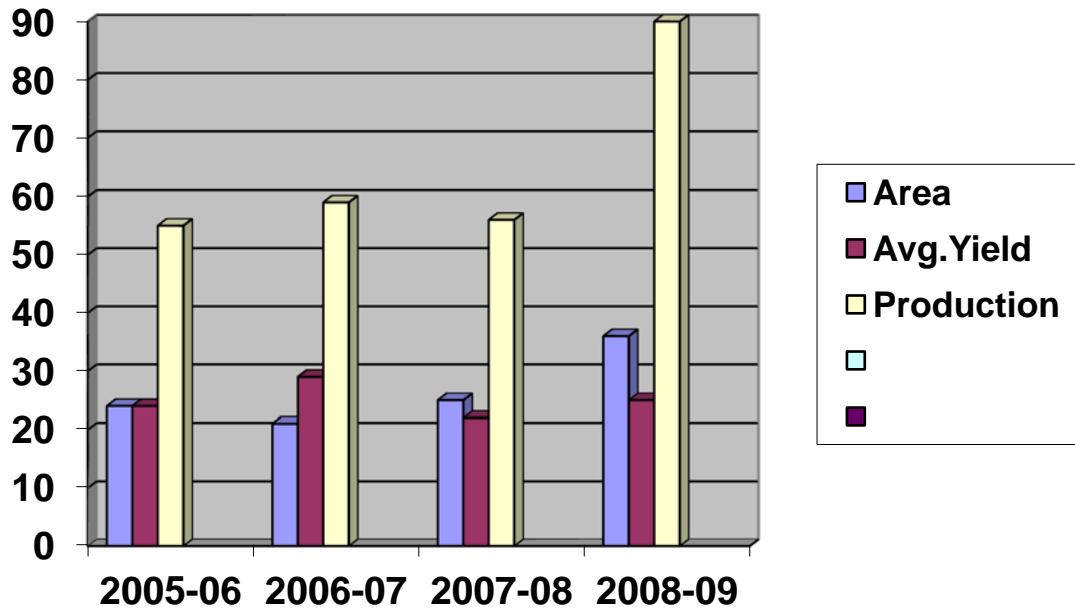


Table-21 Progress of Cotton in Tarn Taran District

Year	Area (ha)	Average yield (Kg/ha)	Production (000,MT)
2003-04	964	266	1.5
2004-05	901	540	3
2005-06	1042	550	3
2006-07	2147	550	7
2007-08	2050	600	7
2008-09	1180	550	

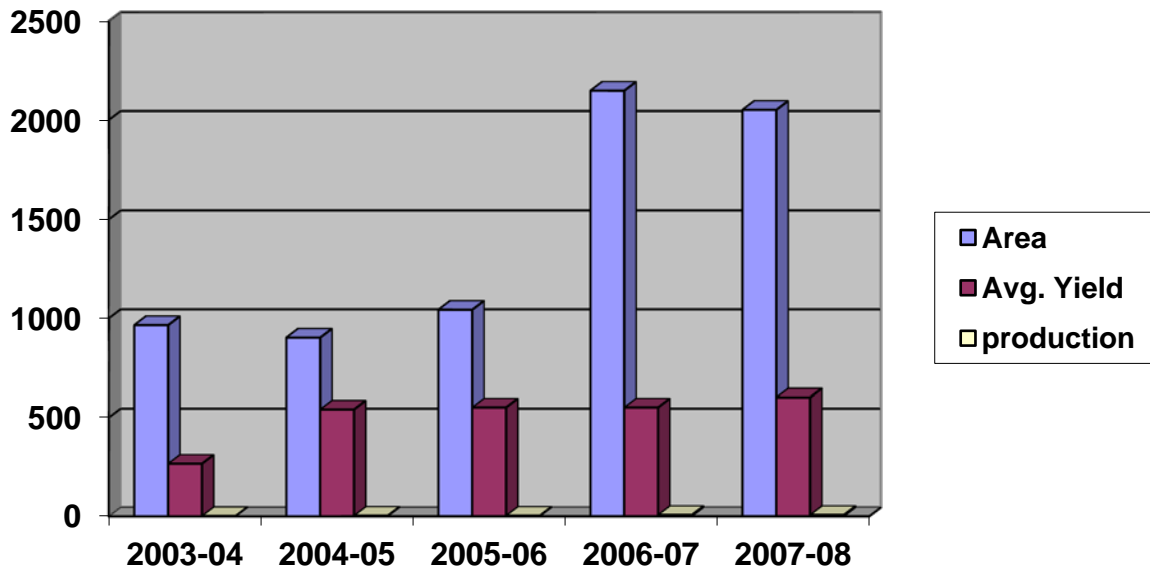


Table-22 Progress of Maize in Tarn Taran District

year	Area (ha)	Average yield (Kg/ha)	Production (000,MT)
2003-04	2329	3146	7
2004-05	2086	3191	7
2005-06	1026	3000	3
2006-07	751	3250	2
2007-08	765	3000	2.2
2008-09	662	3000	1.9

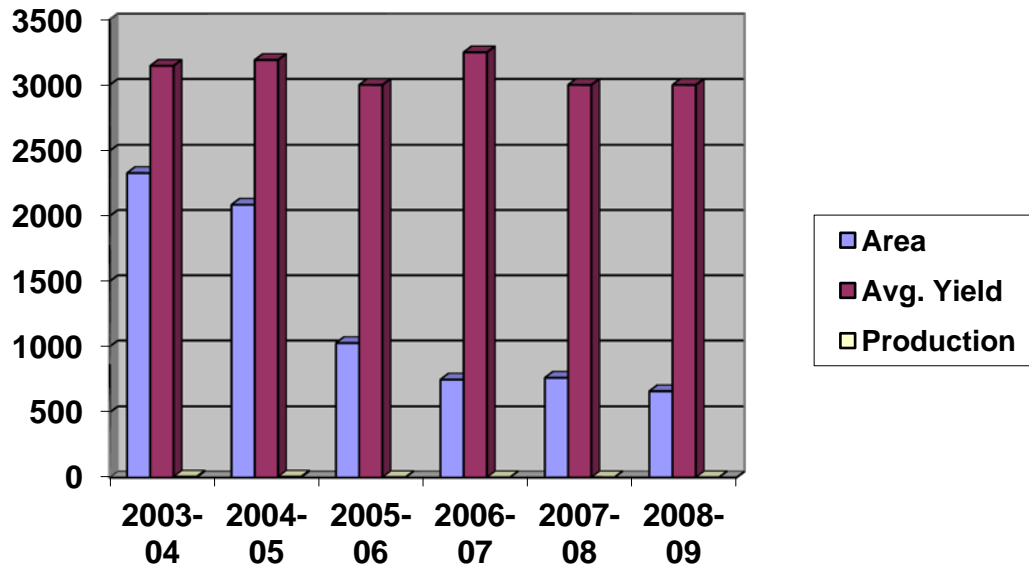


Table-23 Progress of Sugarcane in Tarn Taran District

year	Area (ha)	Average yield (Kg/ha)	Production (000,MT)
2003-04	2415	5688	13
2004-05	1770	6326	11
2005-06	1174	5380	6
2006-07	959	6000	5
2007-08	921	5500	5

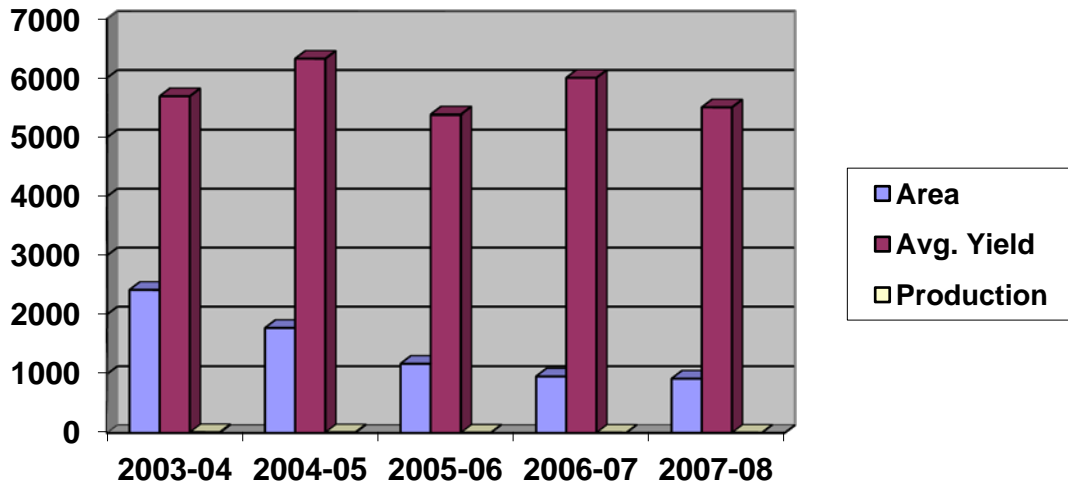


Table-24 Progress of Rapeseed and Mustard in Tarn Taran District

Year	Area (ha)	Average yield (Kg/ha)	Production (000,MT)
2003-04	343	1127	4
2004-05	349	1225	4
2005-06	361	975	3
2006-07	355	1057	4
2007-08	258	1050	3
2008-09	309	1050	3

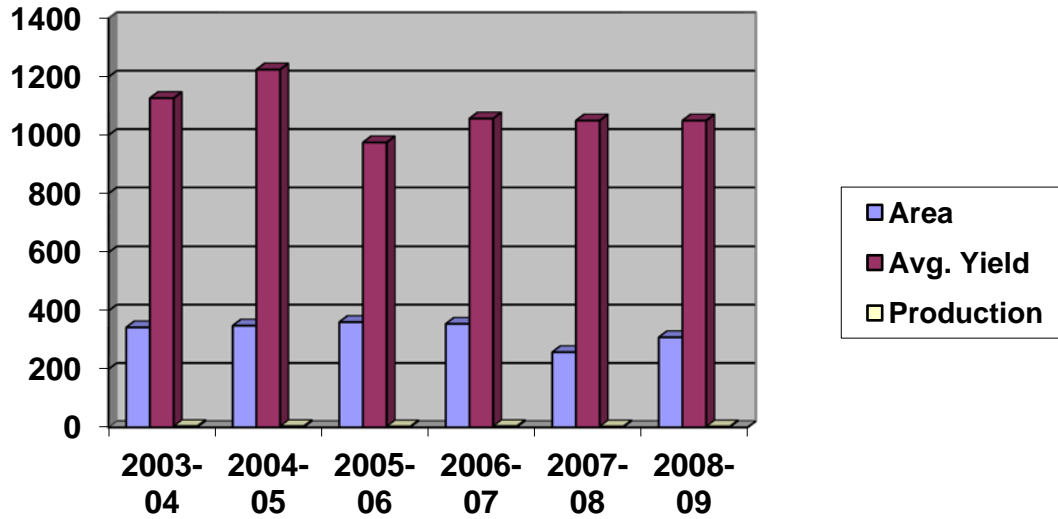


Table-25 Progress of Sesamum (Til) in Tarn Taran District

Year	Area (ha)	Average yield (Kg/ha)	Production (000,MT)
2003-04	2427	348	8
2004-05	2623	478	12
2005-06	2494	352	8
2006-07	2083	350	7
2007-08	1600	375	6
2008-09	900	398	3.5

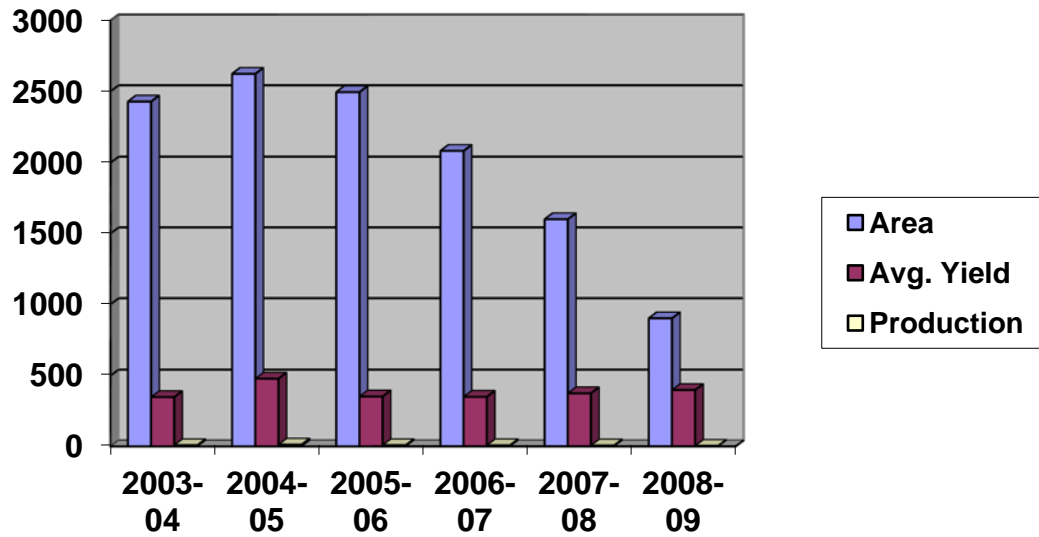


Table-26 Progress of sunflower in Tarn Taran District

Year	Area (ha)	Average yield (Kg/ha)	Production (000,MT)
2003-04	517	1780	9
2004-05	374	1722	6
2005-06	574	1507	9
2006-07	542	1690	9

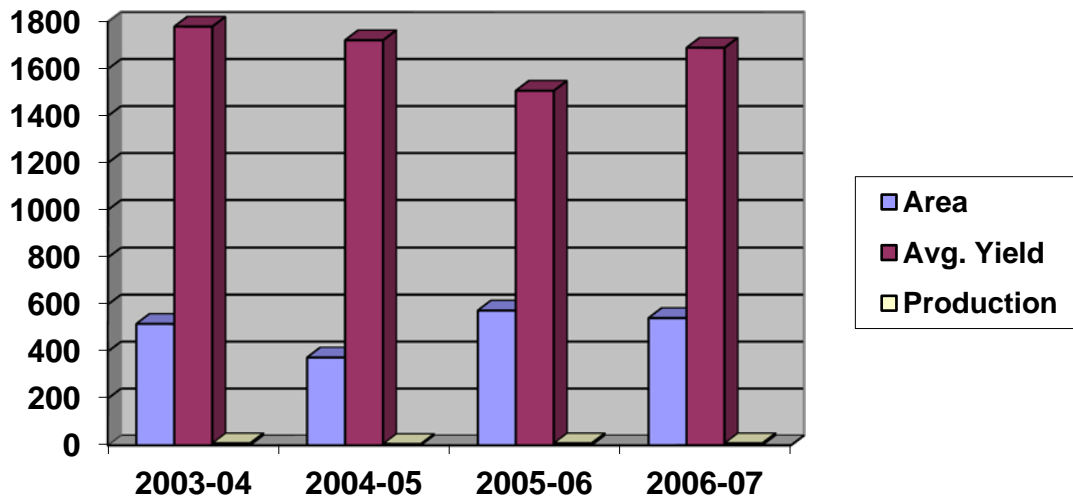


Table-27 Progress of Celery in Tarn Taran District

year	Area (ha)	Average yield (Kg/ha)	Production (000,MT)
2003-04	1141	810	0.9
2004-05	666	815	0.5
2005-06	973	805	0.8
2006-07	767	850	0.6
2007-08	722	830	0.6

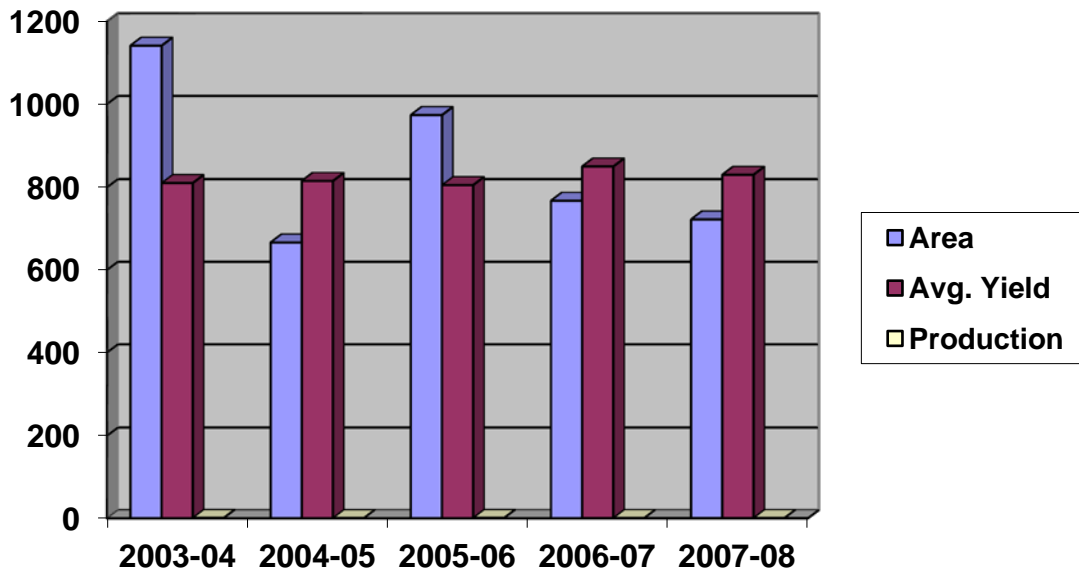


Table-28 Progress of Pulses in Tarn Taran district

Year	Pulses		
	Area (ha)	Production (000MT)	Avg.Yield (Kg/ha)
2003-04	4063	4	1037
2004-05	3502	4	1139
2005-06	2455	2.8	1180
2006-07	2580	3	1050
2007-08	2951	3	1140

