

BASIC PROFILE OF HOSHIARPUR DISTRICT

Particulars	Hoshiarpur	Punjab
Geographical (000 ha)	339	5036
Net Sown Area (000 ha)	200	4200
Cropping Intensity(%)	170	188
Area under forest (000 ha)	108	300
Land put to Non-Agriculture Use (000 ha)	28	458
Area irrigated (%)	81	96
Irrigation by Govt. Canals (%)	9	27
Irrigation by Tubewells & Wells (%)	90	72
No. of Tubewells (per 000 ha)		
Electrical operated	5.05	8.80
Diesel operated	0.11	2.88
Consumption of fertilizers (kg/ha)	202	196

Trends in area, production and yields of different crops

As depicted in Table 16 to 21, there is stagnation in area, production and yields of almost all crops in last 6-7 years. There is some increase in yield of maize and rabi oilseeds. There is significant increase in area, production and yield of fish in the district (Table 22).

Table 21: Progress of Rice in the District

Year	Area (000 Ha)	Production (000,MT)	Average Yield q/ha
2001-02	60	171	28.47
2002-03	56	159	28.38
2003-04	58	179	30.75
2004-05	58	171	29.52
2005-06	61	182	29.75
2006-07	56	157	27.95
2007-08	56	185	33.02

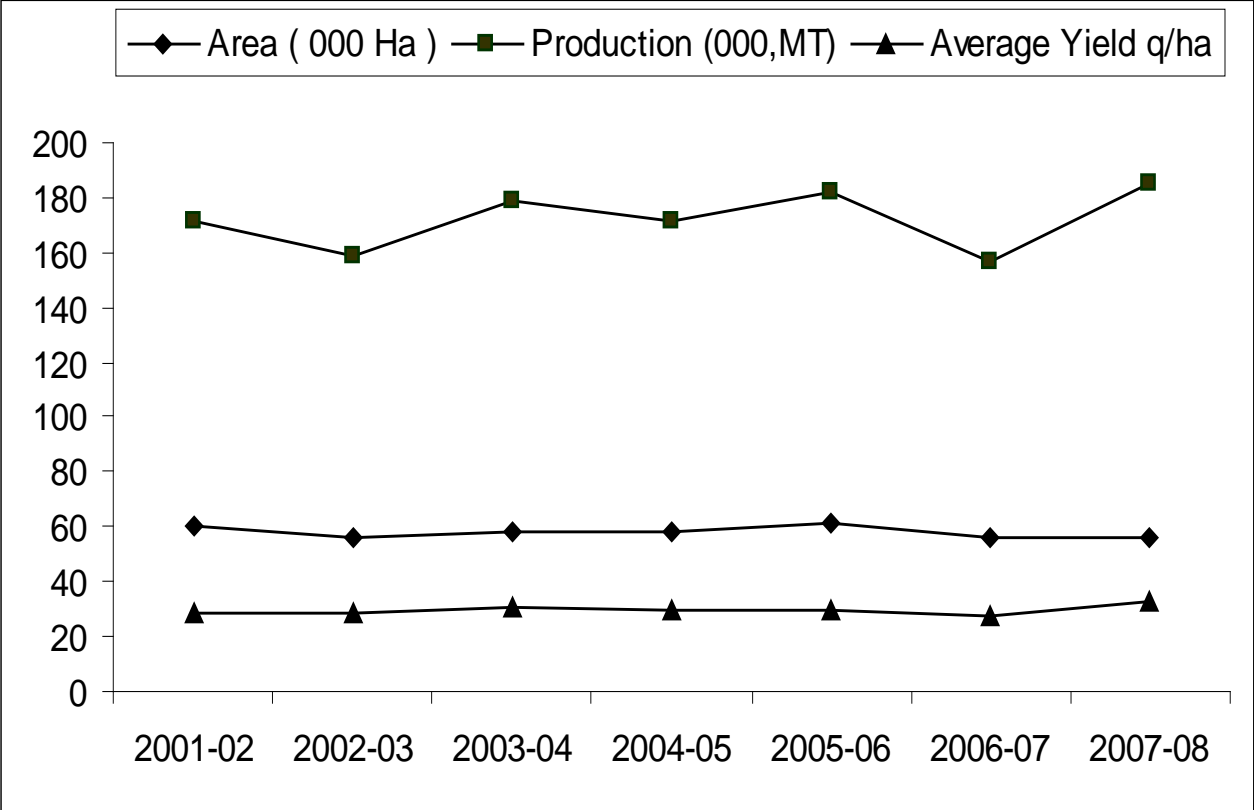


Table 22: Progress of Wheat in the District

Year	Area (000 Ha)	Production (000,MT)	Average Yield q/ha
2001-02	139	502	36.16
2002-03	137	471	34.39
2003-04	146	499	34.17
2004-05	145	493	34.02
2005-06	145	514	35.46
2006-07	142	517	36.42
2007-08	145	552	38.08

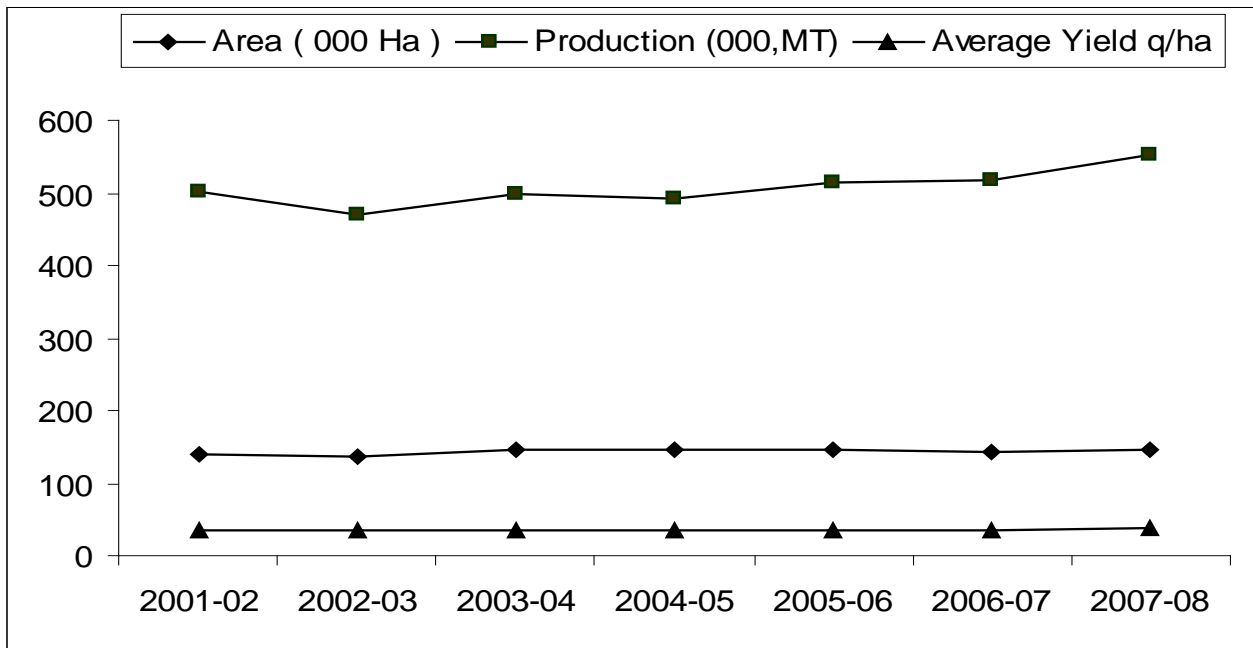


Table 23: Progress of Maize in the District

Year	Area (000 Ha)	Production (000,MT)	Average Yield q/ha
2001-02	65	189	29.12
2002-03	62	128	20.60
2003-04	66	187	28.29
2004-05	67	194	28.86
2005-06	66	172	26.12
2006-07	68	225	33.05
2007-08	70	230	32.89

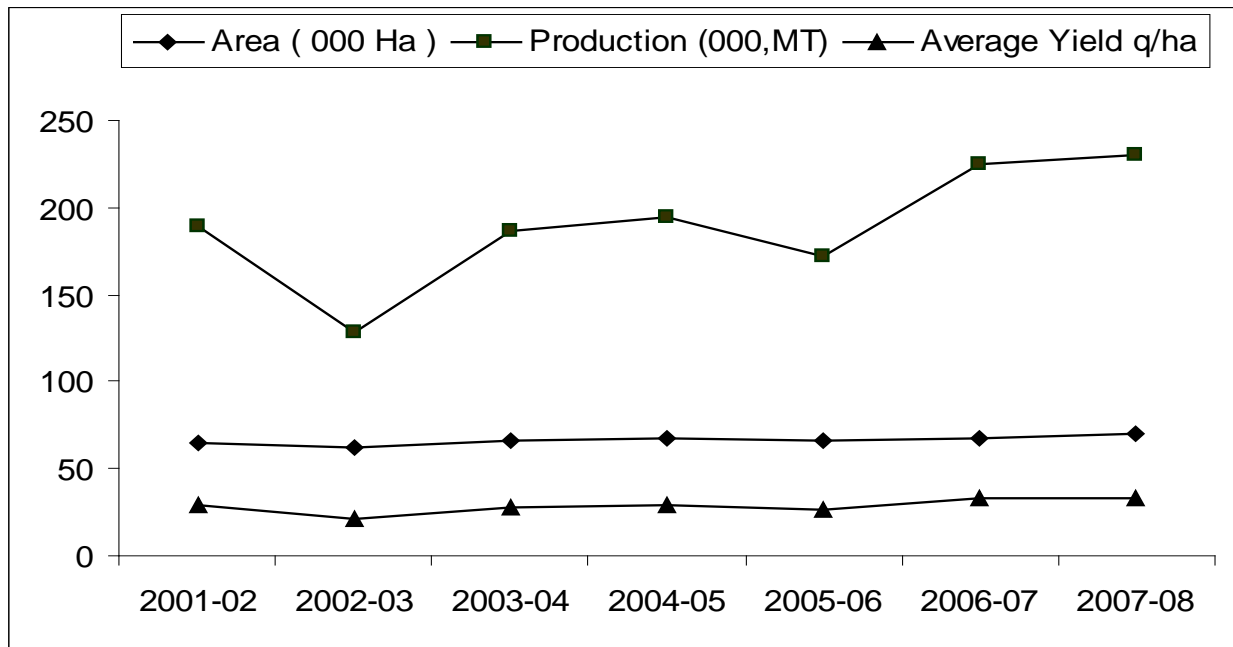


Table 24: Progress of Sugarcane in the District

Year	Area (000 Ha)	Production (000,MT Gur)	Average Yield (Gur) q/ha
2001-02	21	129	61.50
2002-03	25	131	52.34
2003-04	22	117	53.21
2004-05	18	103	57.26
2005-06	21	110	52.13
2006-07	24	132	55.00
2007-08	26	146	56.30

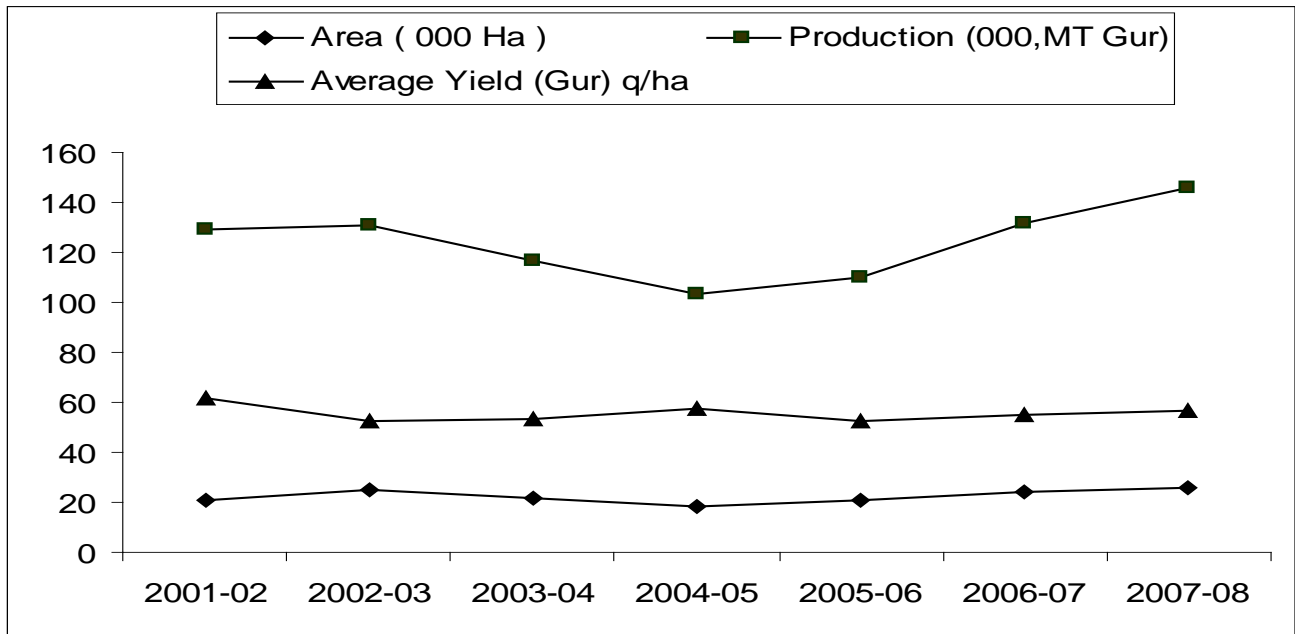


Table 25: Progress of Groundnuts in the District

Year	Area (000 Ha)	Production (000,MT)	Average Yield q/ha
2001-02	3	3	9.20
2002-03	3.1	3	9.00
2003-04	3.0	2.8	9.25
2004-05	3.2	2.8	8.75
2005-06	2.7	2.3	8.80
2006-07	3.5	3	8.75
2007-08	2.7	2.3	8.80

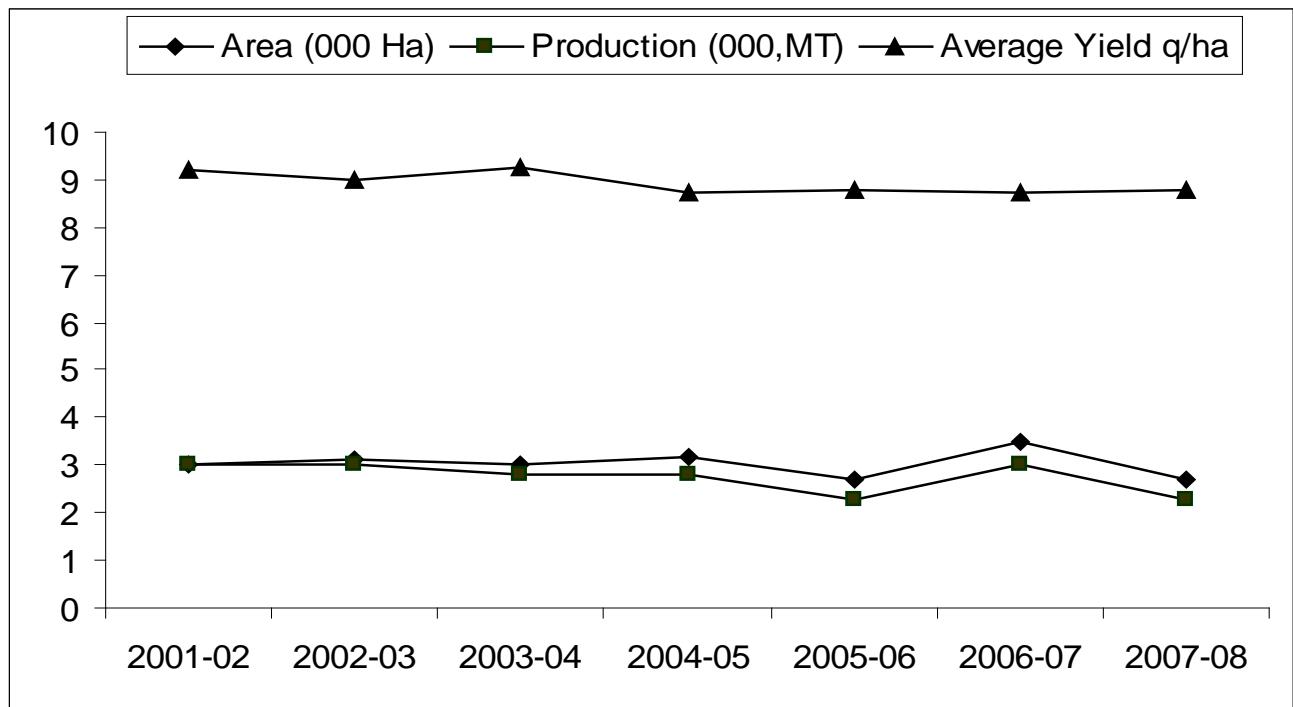


Table 26: Progress of Rabi Oilseeds in the District

Year	Area (000 Ha)	Production (000,MT)	Average Yield q/ha
2001-02	3	3	9.98
2002-03	3	2	7.60
2003-04	3	2	7.00
2004-05	4	4	9.63
2005-06	3	3	11.32
2006-07	4	4	10.87
2007-08	3	2.9	9.90

